



## 6 Odessa Street, London, SE16 7TW

**\*\*Virtually Staged Property / FULLY UNFURNISHED\*\***

A generous two-bedroom, two-bathroom apartment set within the highly desirable riverside development, New Caledonian Wharf in Rotherhithe.

The property boasts a spacious and naturally bright living room, leading onto a private balcony with stunning views across the River Thames towards Canary Wharf and the London skyline. The modern kitchen is fully fitted with high-specification appliances, complementing the apartment's contemporary finish throughout.

There are two well-proportioned double bedrooms, including a generously sized principal bedroom with a newly refurbished ensuite. The second bedroom offers ample storage space and is served by a stylish family bathroom. Additional features include underfloor heating throughout, enhancing comfort and efficiency.

Further benefits include an allocated underground parking space and access to an exceptional range of resident amenities. These include a 24-hour concierge service, fully equipped gym, swimming pool, riverfront terrace, and a residents' function room.

- Stunning river views towards Canary Wharf and the London skyline
- Spacious two double bedroom, two bathroom layout
- Private balcony with panoramic Thames views
- High specification interior with underfloor heating throughout
- Newly refurbished ensuite to principal bedroom
- Allocated underground parking space
- Exclusive resident amenities including 24hr concierge, gym, swimming pool & riverfront terrace

**Alex & Matteo**  
ESTATE AGENTS

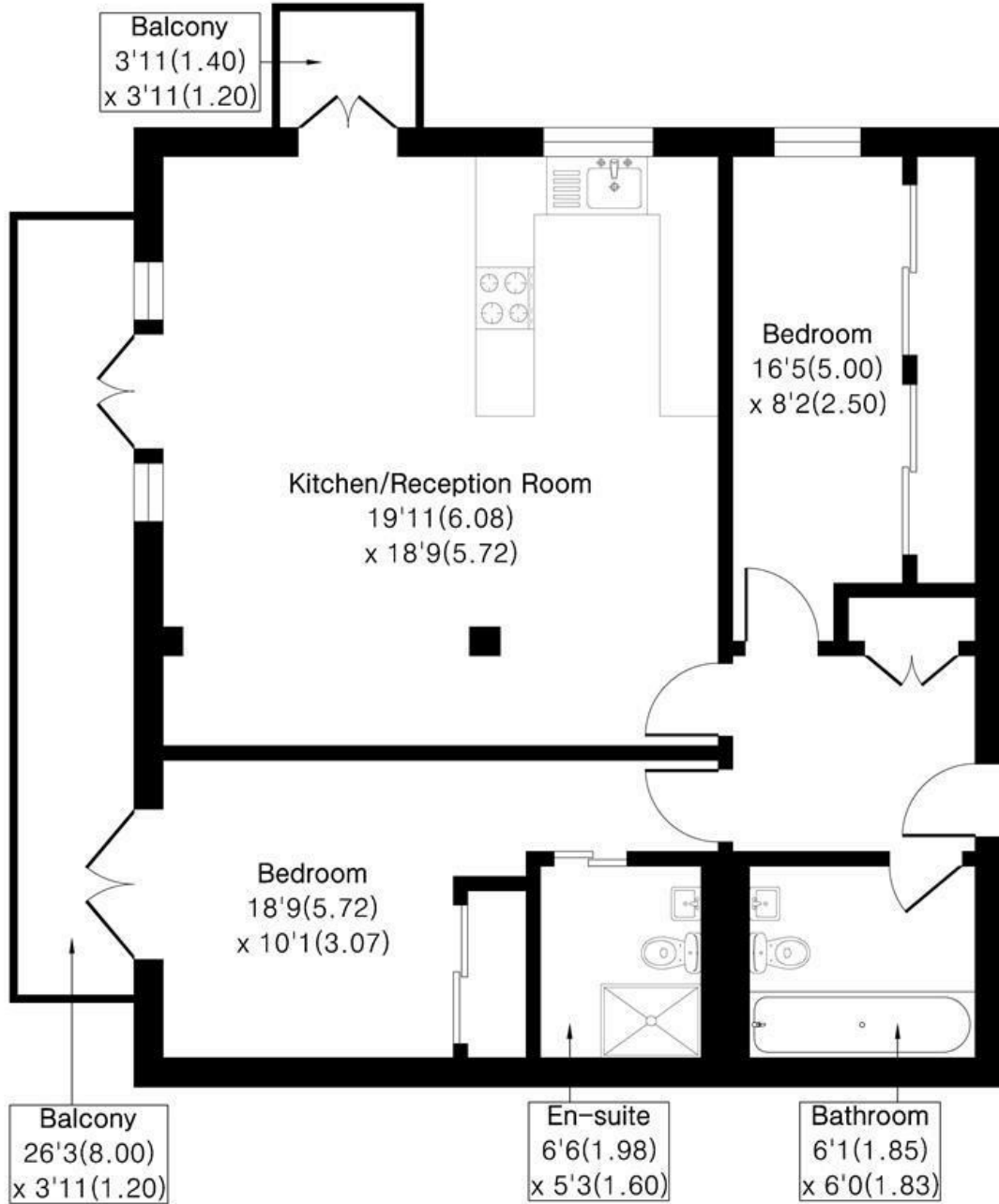
**£2,900 Per month**

# New Caledonian Wharf, Odessa Street London, SE16 7TW



Approximate Area = 838 sq ft / 77.8 sq m

For identification only - Not To Scale



Floor plan Produced in accordance with RICS Property Measurement 2nd Edition.  
Incorporating International Property Measurement Standards (IPMS2 Residential).  
Produced for Alex & Matteo Estate Agents.

